

Spectroelectrochemical cells

01

RAMANCELL

RAMAN cell for screen-printed electrodes (SPEs)

Cell suitable to perform **RAMAN experiments with screen-printed electrodes** along with a RAMAN Probe (ref. RAMANPROBE). Also, it has a small aluminum crucible holders to facilitate precise optical characterization of solid and liquid samples. The crucibles included have different depths: 1.6 mm and 4.2 mm.

This cell has been developed in PEEK with an innovative open-close system (no screws required) for an easy sensors replacement.



TLFCLRAMANCELL

RAMAN flow cell for thin layer flow-cell screen-printed electrodes (TLFCL SPEs)

The TLFCLRAMANCELL is suitable to perform **RAMAN flow spectroelectrochemical measurements in combination with TLFCL screen-printed electrodes**. It has a hole for fitting the reference RAMANPROBE getting an easy and optimized set-up for RAMAN experiments.

This cell has been developed in PEEK with an innovative open-close system (no screws required) for an easy sensors replacement.

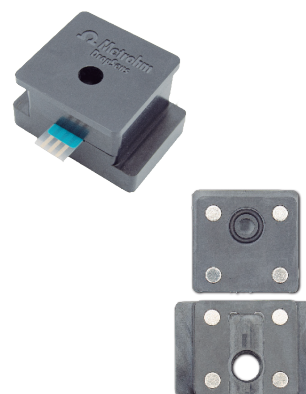


TRANSCCELL

Cell for transmission experiments with screen-printed electrodes

This cell is suitable for conducting **transmission experiments with transparent substrate screen-printed electrodes** in conjunction with a transmission fiber (ref. TFIBER-VIS-UV), collimating lens (ref. CLENS) and reflection probe (ref. RPROBE-VIS-UV).

The cell is developed in PEEK with an innovative open-close system (no screws required) for an easy replacement of the sensors.



www.metrohm-dropsens.com

 **Metrohm**
DropSens

Spectroelectrochemical cells

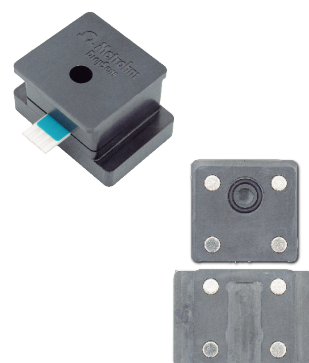
02

REFLECELL

Cell for reflection experiments with screen-printed electrodes

This cell allows to carry out **reflection experiments with screen-printed electrodes** in combination with a reflection probe (ref. RPROBE-VIS-UV).

The cell is made in PEEK with an innovative open-close system (no screws required) for an easy replacement of the sensors.



TLFCL-REFLECELL

Reflection flow cell for TLFCL SPEs

This cell is a suitable support for **spectroelectrochemical measurements in flow with TLFCL SPEs**, thanks to its design with a hole to place the reference RPROBE-VIS-UV.

In combination with the ref. TLFCL-FLOWFITTING and TLFCL-INLINEPORT, an easy and comfortable setup for reflection experiments under flow conditions is achieved.

In addition, it has an innovative open-close system (no screws required) for an easy sensor replacement.



PTGRID-TRANSCELL

Cell for bulk electrolysis

The PTGRID-TRANSCELL cell allows mass electrolysis to be easily performed while **transmission measurements** (1 mm optical path) are acquired in the solution close to the electrode.

The cell also includes the platinum grid working electrode, platinum counter, and a Ag/AgCl chloride reference electrode.



www.metrohm-dropsens.com

Spectroelectrochemical cells

03

RAMANCELL-C

Raman spectroelectrochemical cell for conventional electrodes

Cell with support included for **Raman spectroelectrochemical measurements**. It is **designed in PEEK** and has a **magnetic opening and closing system** (without screws).

It is useful for experiments in **aqueous and organic solvents** (recommended maximum volume 3 mL).

The cell is designed be used with ref. **RAMANPROBE** and **conventional Metrohm electrodes**. Thanks to the different positions in the top cover of the cell you can adjust the focal distance of RAMANPROBE in order to easily optimize your measurements.



www.metrohm-dropsens.com