

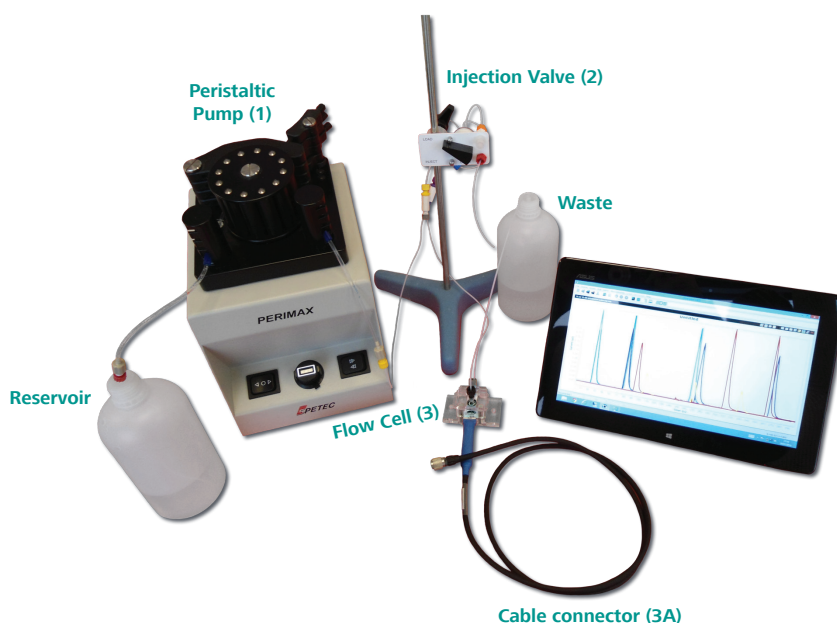
# Flow Injection Analysis (FIA) System for Electrochemical Detection

## Ref. FIAEC

**Flow-Injection Analysis (FIA) system Electrochemical Detection (FIA-ED)** has many applications in the laboratory and in process control as it is a powerful tool for analysis. Its versatility relies in its self-adaptation for different configurations depending on the design of the chemical experiment.

**FIAEC** is a package with all the needed components to set up a flow-injection system with Screen-Printed Electrodes:

- Peristaltic Pump (ref. PPUMP).
- PVC tubes for peristaltic pump, including several diameters (ref. PVCTUBE).
- Manual Sample Injection Valve, including 0.5 mL, 1.0 mL and 2.5 mL sample loops (ref. VALVE).
- Flow-Cell for Screen-Printed Electrodes (ref. FLWCL).
- Flow-fittings Pack, including 2 nuts for grippers, 2 grippers and 80 cm of tubing 1/16 (ref. FLOWFITTINGS).
- Two bottles as reservoir and waste containers, tubing, Teflon tape and a test tube.
- **FIAEC** is a package with all the components needed unless DropSens' bipotentiostats/galvanostats.



[www.metrohm-dropsens.com](http://www.metrohm-dropsens.com)