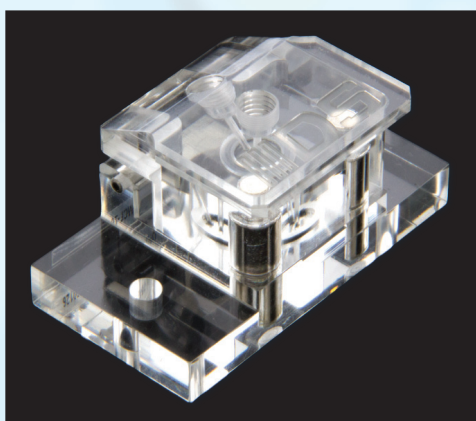


Flow-Cell for Screen-Printed Electrodes

Refs. FLWCL
FLWCL-TEF
FLWCL-PEEK
FLWCL-P

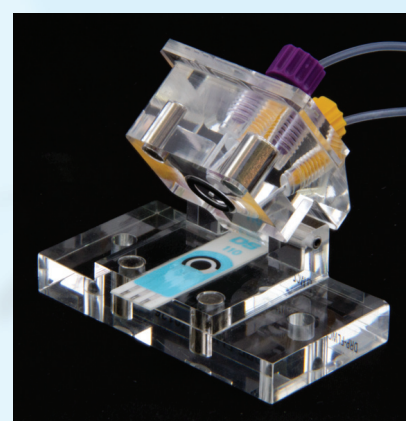
DropSens Flow-Cell (ref. **FLWCL**) is a methacrylate wall-jet Flow-Cell for FIA, with an innovative open-close system (no screws needed) and an easy sensors replacement.



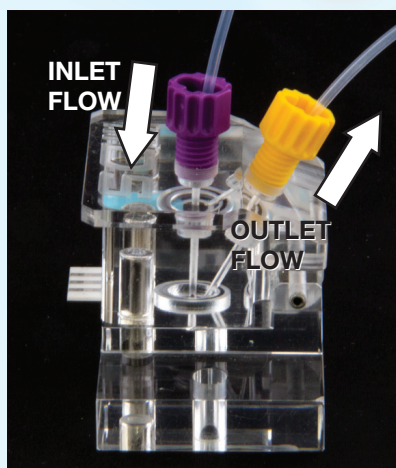
Due to the transparency of the material, the possible presence of bubbles is easily detectable.



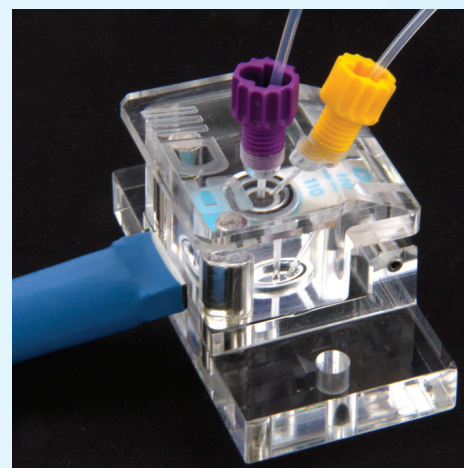
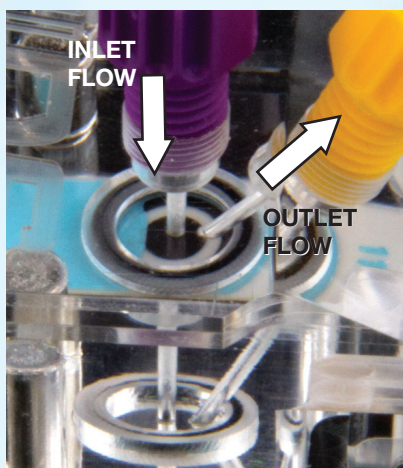
An O-ring limits the volume of the electrochemical cell.



It can be used with all DropSens Screen-Printed Electrodes with the sensing part in the middle of the strip.



This cell is designed to obtain an inlet flow perpendicular to the electrode's surface, and an outlet flow forming a 45° angle.



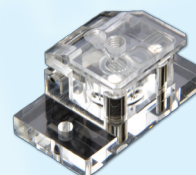
The use of our Cable Connector ref. CAC allows an easy connection to any potentiostat.

Flow-Cell for Screen-Printed Electrodes

Refs. FLWCL FLWCL-TEF FLWCL-PEEK FLWCL-P

In addition to methacrylate our Flow-Cell is available in Teflon and PEEK, materials which have a higher stability, thus suitable to work with organic solvents.

Flow-Cell for Screen-Printed Electrodes Ref. FLWCL



Flow-Cell in Teflon for Screen-Printed Electrodes Ref. FLWCL-TEF



Flow-Cell in PEEK for Screen-Printed Electrodes Ref. FLWCL-PEEK



Flow-Cell in Polypropylene for Screen-Printed Electrodes Ref. FLWCL-P



Each Flow-Cell includes a Flow-fittings pack (2 nuts for grippers, 2 grippers and 80 cm. of tubing 1/16).

Also, specific cable connectors that act as an interface between the Screen-Printed Electrode and any potentiostat (ref. **CAC**) or **DropSens** potentiostats (ref. **CAST**) are available.

Related products



110



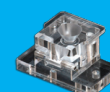
220AT



CAC



CAST



CFLWCL-CONIC

Full Catalogue



Parque Tecnológico de Asturias - Edif. CEEI. 33428 LLanera (Asturias). Spain
(+34) 985 27 76 85 - info@dropsens.com - www.dropsens.com

Contact Form

