

# Spectroelectrochemical cells

01

## RAMANCELL

### RAMAN cell for screen-printed electrodes (SPEs)

Cell suitable to perform **RAMAN experiments with screen-printed electrodes** along with a RAMAN Probe (ref. RAMANPROBE). Also, it has a small aluminum crucible holders to facilitate precise optical characterization of solid and liquid samples. The crucibles included have different depths: 1.6 mm and 4.2 mm.

This cell has been developed in PEEK with an innovative open-close system (no screws required) for an easy sensors replacement.



## TLFCLRAMANCELL

### RAMAN cell for thin layer flow-cell screen-printed electrodes (TLFCL SPEs)

The TLFCLRAMANCELL is suitable **to perform RAMAN flow spectroelectrochemical measurements in combination with TLFCL screen-printed electrodes**. It has a hole for fitting the reference RAMANPROBE getting an easy and comfortable set-up for RAMAN experiments.

This cell has been developed in PEEK with an innovative open-close system (no screws required) for an easy sensors replacement.



## TRANSCCELL

### Cell for transmission experiments with screen-printed electrodes

This cell is suitable for conducting **transmission experiments with transparent substrate screen-printed electrodes** in conjunction with a transmission fiber (ref. TFIBER-VIS-UV), collimating lens (ref. CLENS) and reflection probe (ref. RPROBE-VIS-UV).

The cell is developed in PEEK with an innovative open-close system (no screws required) for an easy replacement of the sensors.



[www.metrohm-dropsens.com](http://www.metrohm-dropsens.com)

 **Metrohm**  
DropSens

# Spectroelectrochemical cells

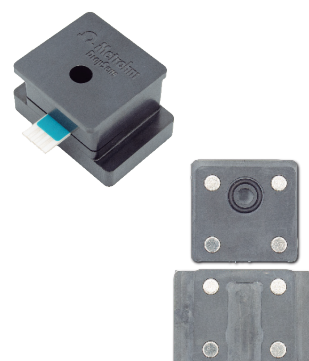
02

## REFLECELL

Cell for reflection experiments with screen-printed electrodes

This cell allows to carry out **reflection experiments with screen-printed electrodes** in combination with a reflection probe (ref. RPROBE-VIS-UV).

The cell is made in PEEK with an innovative open-close system (no screws required) for an easy replacement of the sensors.



## TLFCL-REFLECELL

Reflection flow-cell for TLFCL SPEs

This cell is a suitable support for **spectroelectrochemical measurements in flow with TLFCL SPEs**, thanks to its design with a hole to place the reference RPROBE-VIS-UV.

In combination with the ref. TLFCL-FLOWFITTING and TLFCL-INLINEPORT, an easy and comfortable setup for reflection experiments under flow conditions is achieved.

In addition, it has an innovative open-close system (no screws required) for an easy sensor replacement.



## PTGRID-TRANSCELL

Cell for bulk electrolysis

The PTGRID-TRANSCELL cell allows mass electrolysis to be easily performed while **transmission measurements** (1 mm optical path) are acquired in the solution close to the electrode.

The cell also includes the platinum grid working electrode, platinum counter, and a Ag/AgCl chloride reference electrode.



[www.metrohm-dropsens.com](http://www.metrohm-dropsens.com)