

## Reduced Graphene Oxide modified Screen-Printed Electrodes

Refs. 110RGPHOX  
X1110RGPHOX



Reduced Graphene Oxide modified  
Screen-Printed Electrode  
Ref. 110RGPHOX



Reduced Graphene Oxide modified  
Dual Screen-Printed Electrode  
Ref. X1110RGPHOX

These disposable Screen-Printed Carbon Electrodes (SPCEs) modified with electrochemically Reduced Graphene Oxide as a carbon based nanomaterial are designed for the development of (bio)sensors with an enhanced electrochemical active area.

*Ceramic substrate:* L33 X W10 X H0.5 mm

*Electric contacts:* Silver

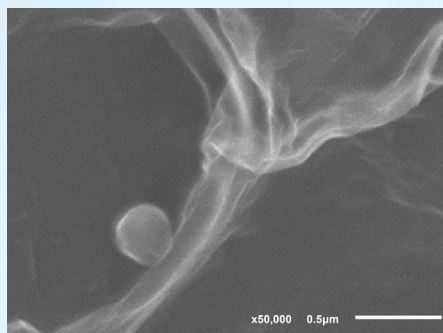
The electrochemical cell consists on:

*Working electrode(s):* RGPHOX / Carbon

*Counter electrode:* Carbon

*Reference electrode:* Silver

Reduced Graphene Oxide SPCEs are individually packed 50 units packs. Store at room temperature, protected from light in a dry place.



SEM image of the working electrode modified with Reduced Graphene Oxide

Also, specific connectors that act as an interface between the screen-printed electrode and any potentiostat (ref. DSC or CAC) and other accessories are available at [DropSens](http://DropSens.com).

### Related products



110GPH



DSC



CAST



FLWCL



SPELEC



STAT400

Full Catalogue



Parque Tecnológico de Asturias - Edif. CEEI. 33428 LLanera (Asturias). Spain  
(+34) 985 27 76 85 - [info@dropsens.com](mailto:info@dropsens.com) - [www.dropsens.com](http://www.dropsens.com)

Contact Form

